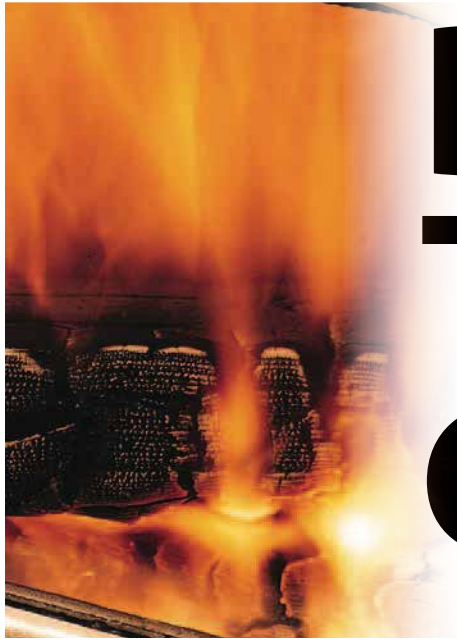




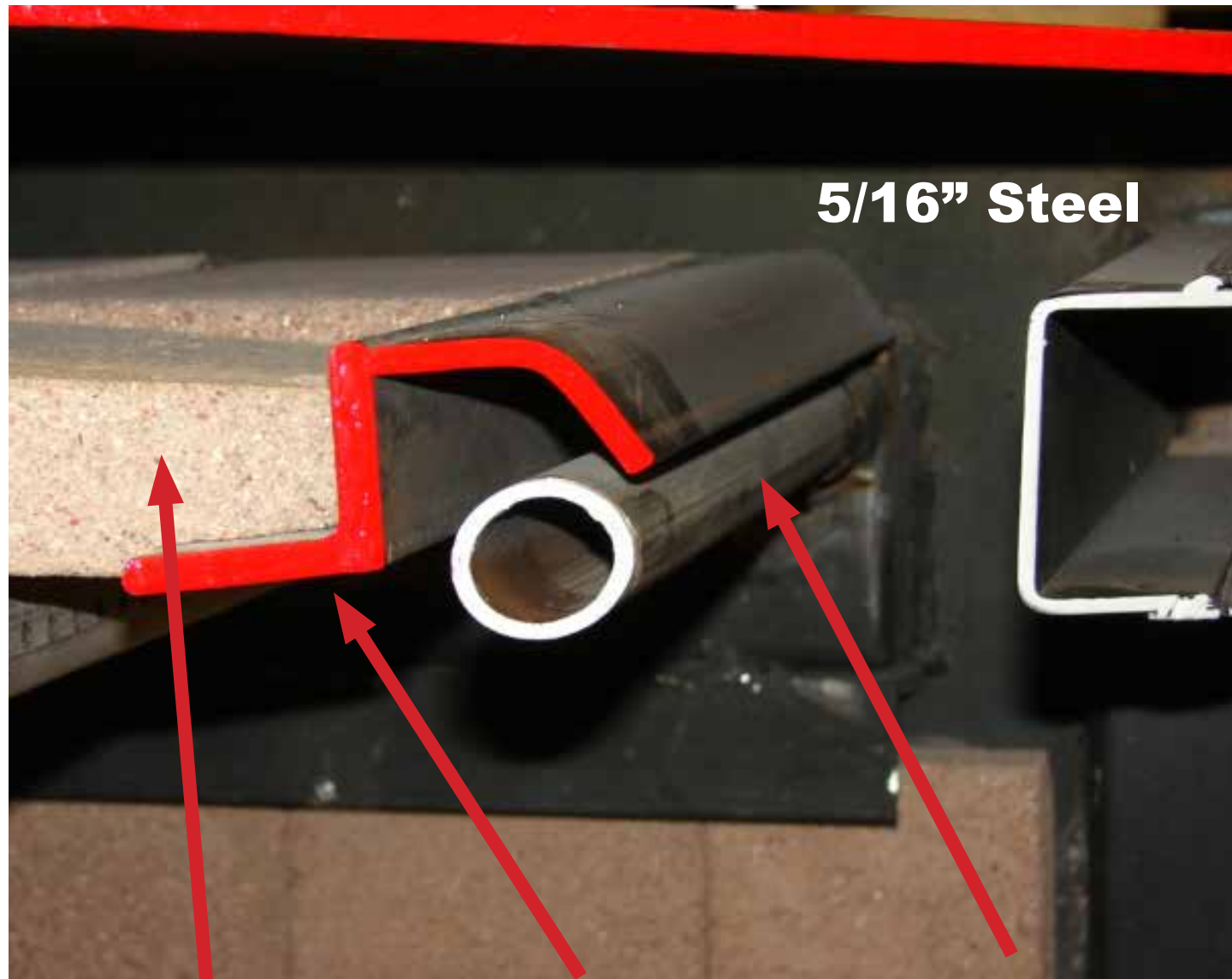
**TRAVIS INDUSTRIES**  
**HOUSE OF FIRE**



# Dare To Compare

Your guide comparing  
construction between  
Lopi wood stoves and  
the competition

# Baffle - Ours



**Kiln Fired  
Masonry  
Firebrick  
Baffle**

**5/16" Steel  
Angle Iron  
Brace**

**Stainless Air  
Steel Tube  
Wall  
Thickness is  
Schedule 40  
0.12" -  
11 gauge**

# Baffle - Theirs

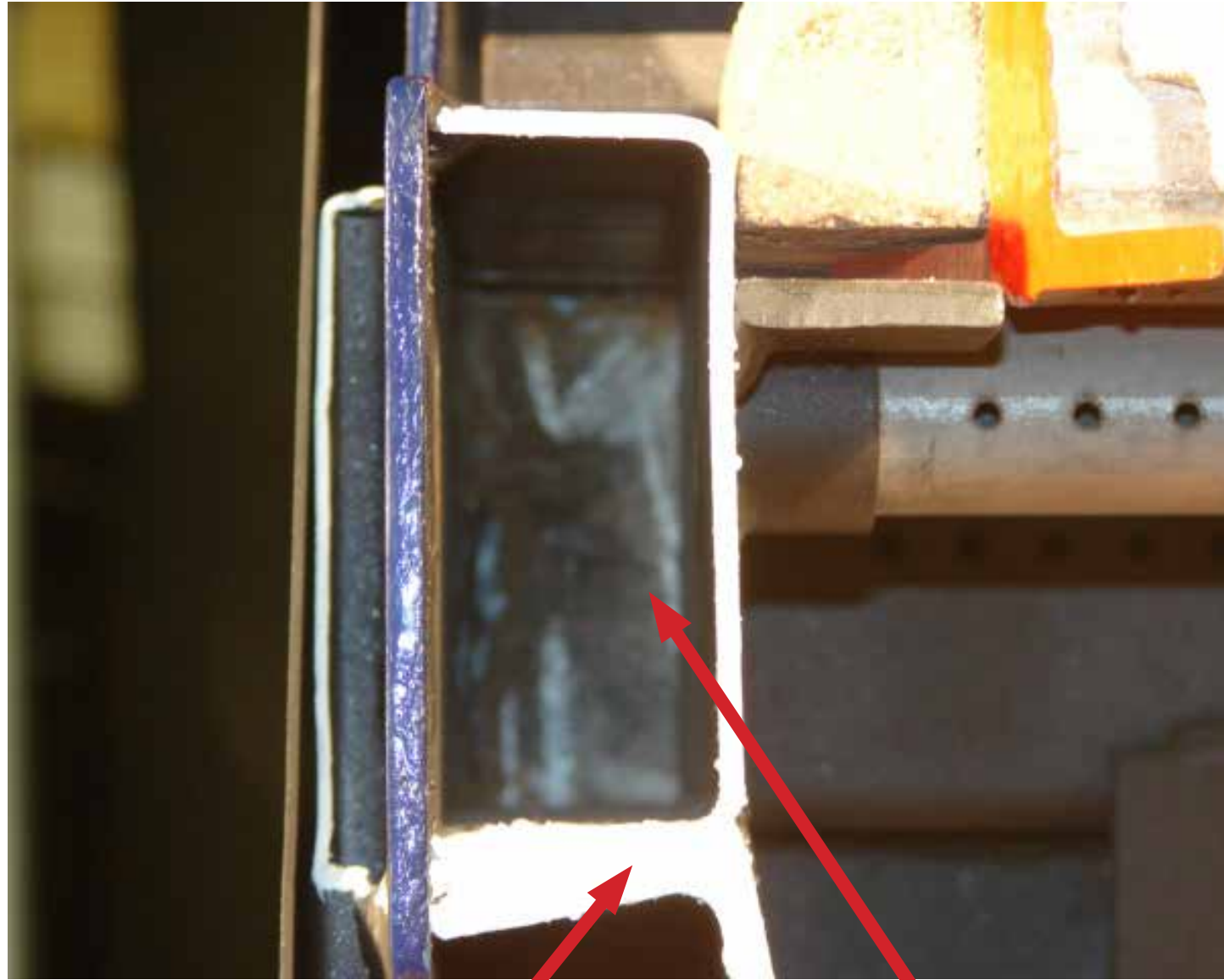


**Fragile Fiber  
Board Baffle  
with Wool  
Blanket**

**1/8" Thin  
Gauge  
Retainer  
to Protect  
Frigile Fiber  
Board**

**Stainless Air  
Steel Tube  
Wall  
Thickness is  
Schedule 40  
0.062" -  
16 gauge**

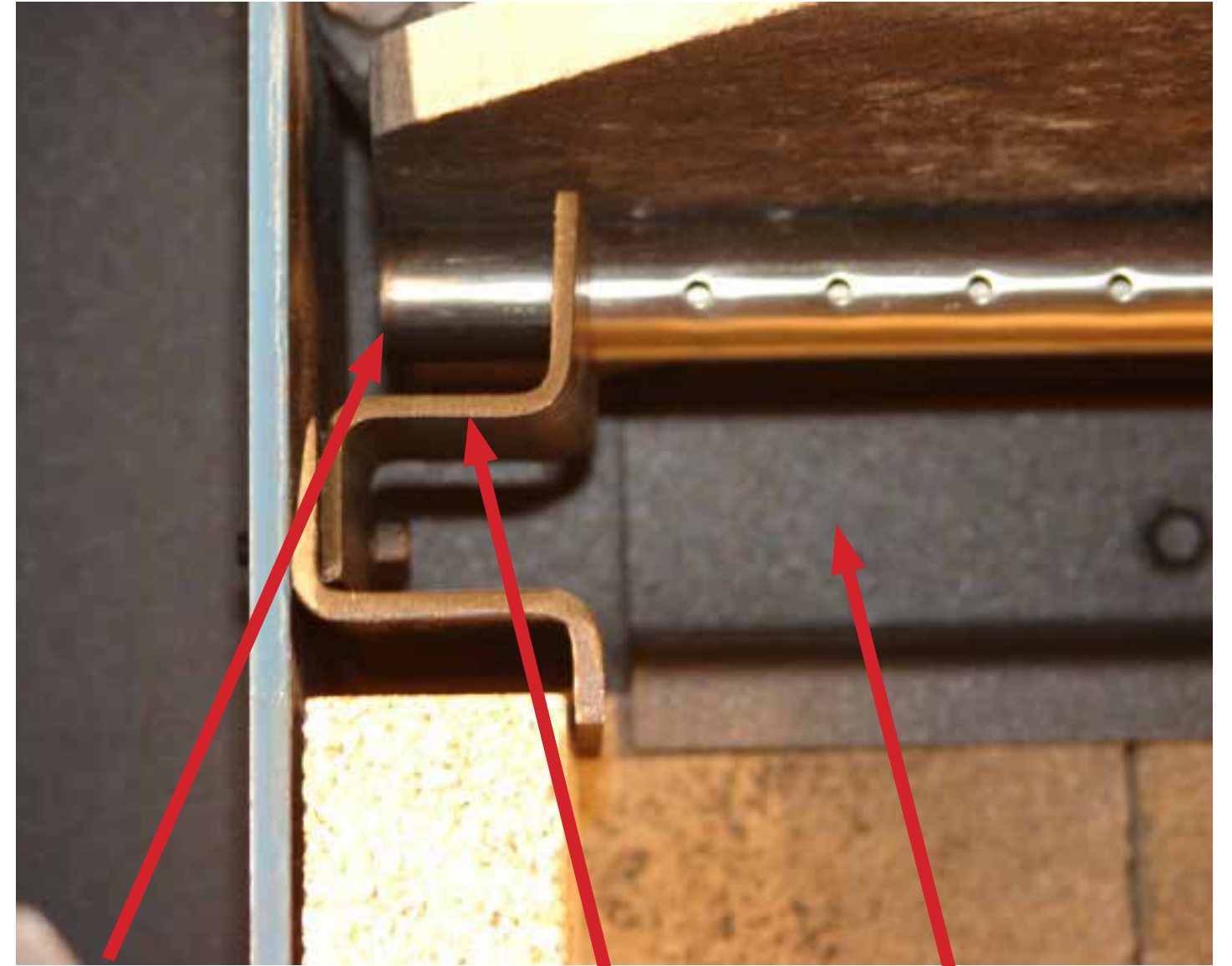
# Brick Retainer & Air Chamber - Ours



**Welded in  
1/4" Steel  
Brick  
Retainer**

**Welded in  
10 Gauge Air  
Chamber**

# Brick Retainer & Air Chamber - Theirs



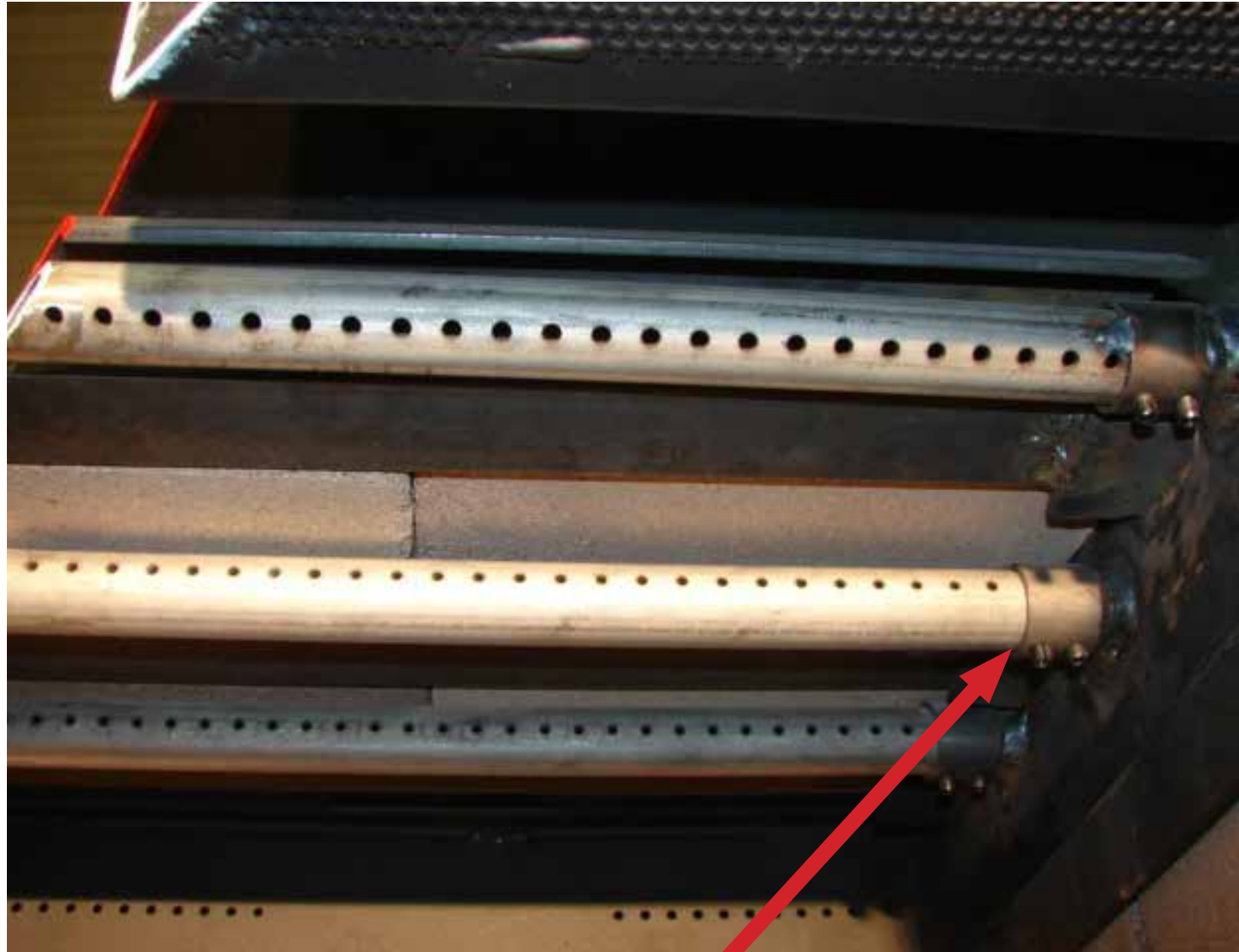
**Air Tubes  
Dead End  
in Open Air  
Channel**

**Open Air  
Chamber,  
Bolted in  
11 Gauge**

**Bolt in  
Brick  
Retainer  
10 Gauge**

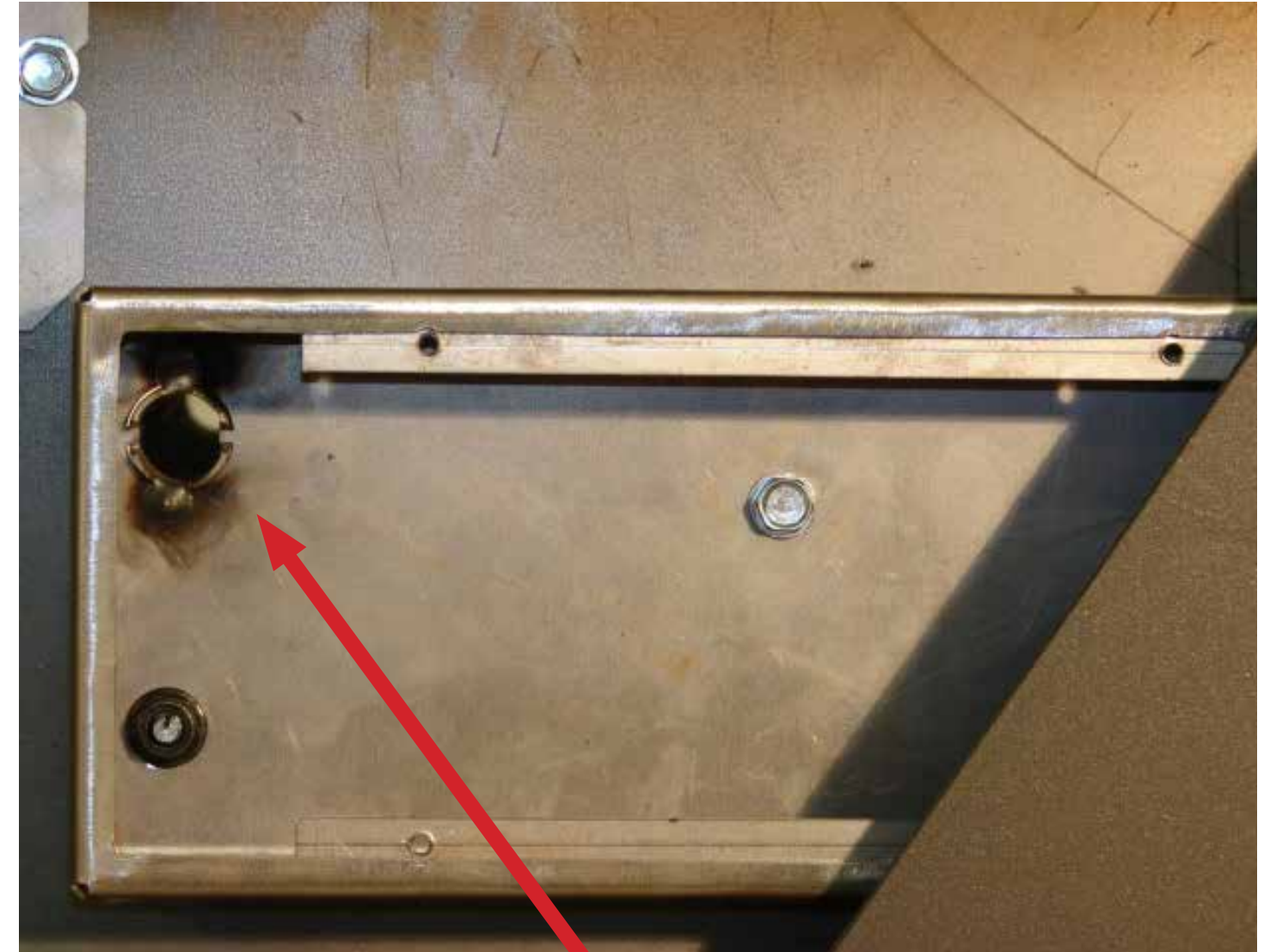


## Air Tubes - Ours



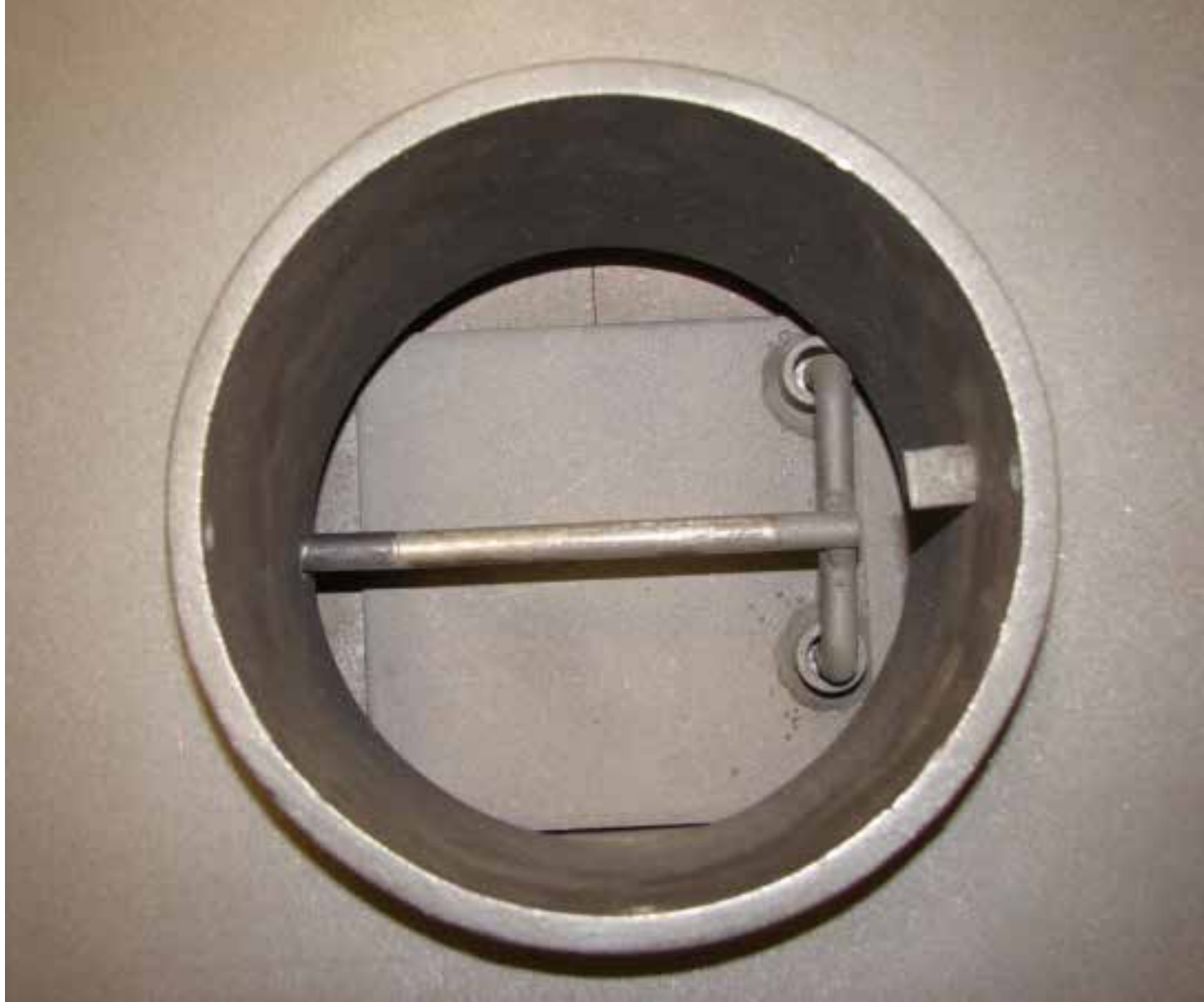
**Easy To  
Remove  
Secondary Air Tubes**

## Air Tubes - Theirs



**Access to Air Tubes Through Bolt  
in Sheet Metal Box On Outside of  
Stove with Tubes Welded Into It.  
No Gasket**

## Flue Collar - Ours



- **5/16" Well Casing Flue Collar**
- **Welded To Top Of Firebox**
- **Bypass Damper for Easy Start-up**

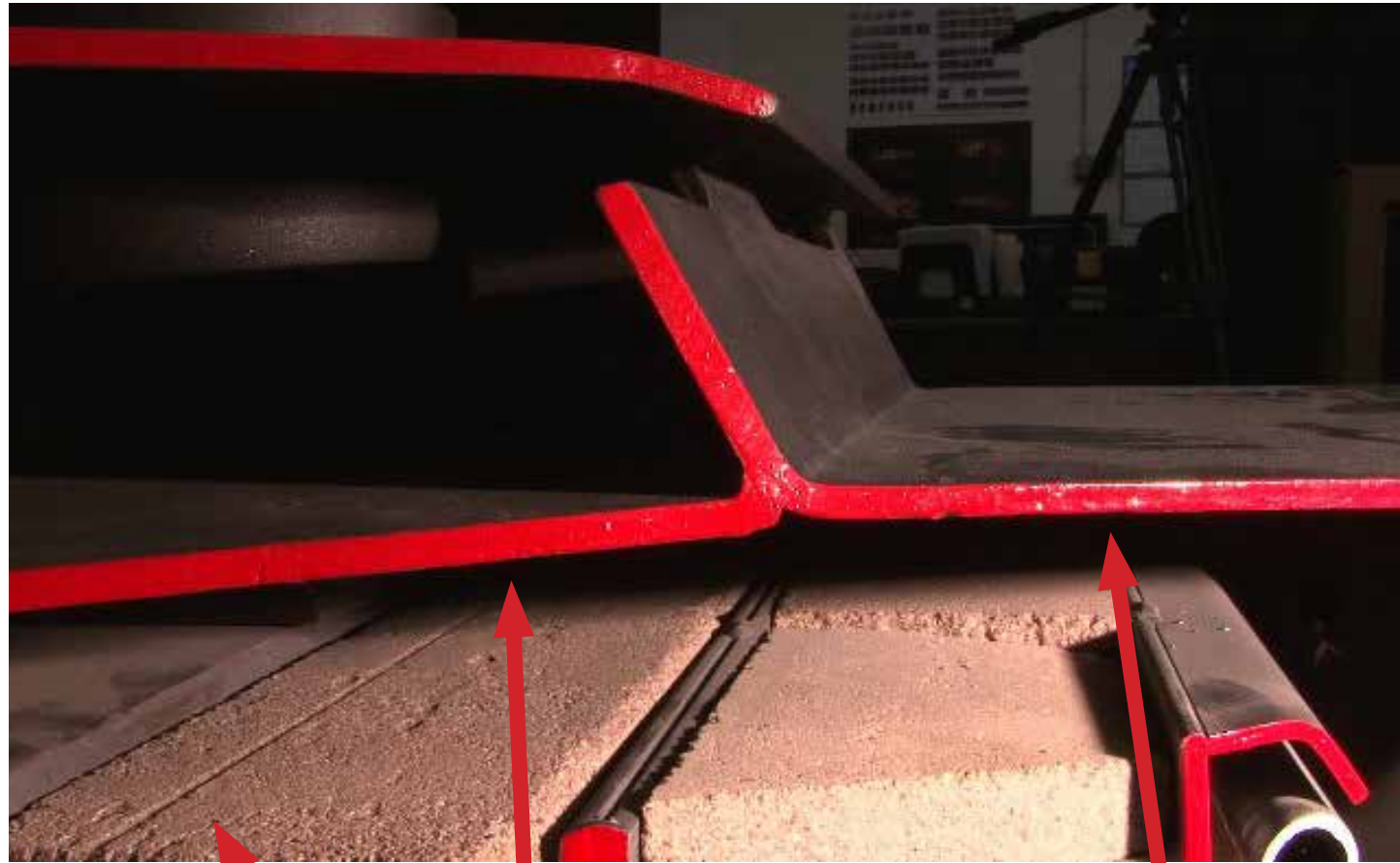
## Flue Collar - Theirs



- **No Gasket Seal**
- **Thin Cast Iron Flue Bolted onto Steel Plate**
- **No Bypass Damper**

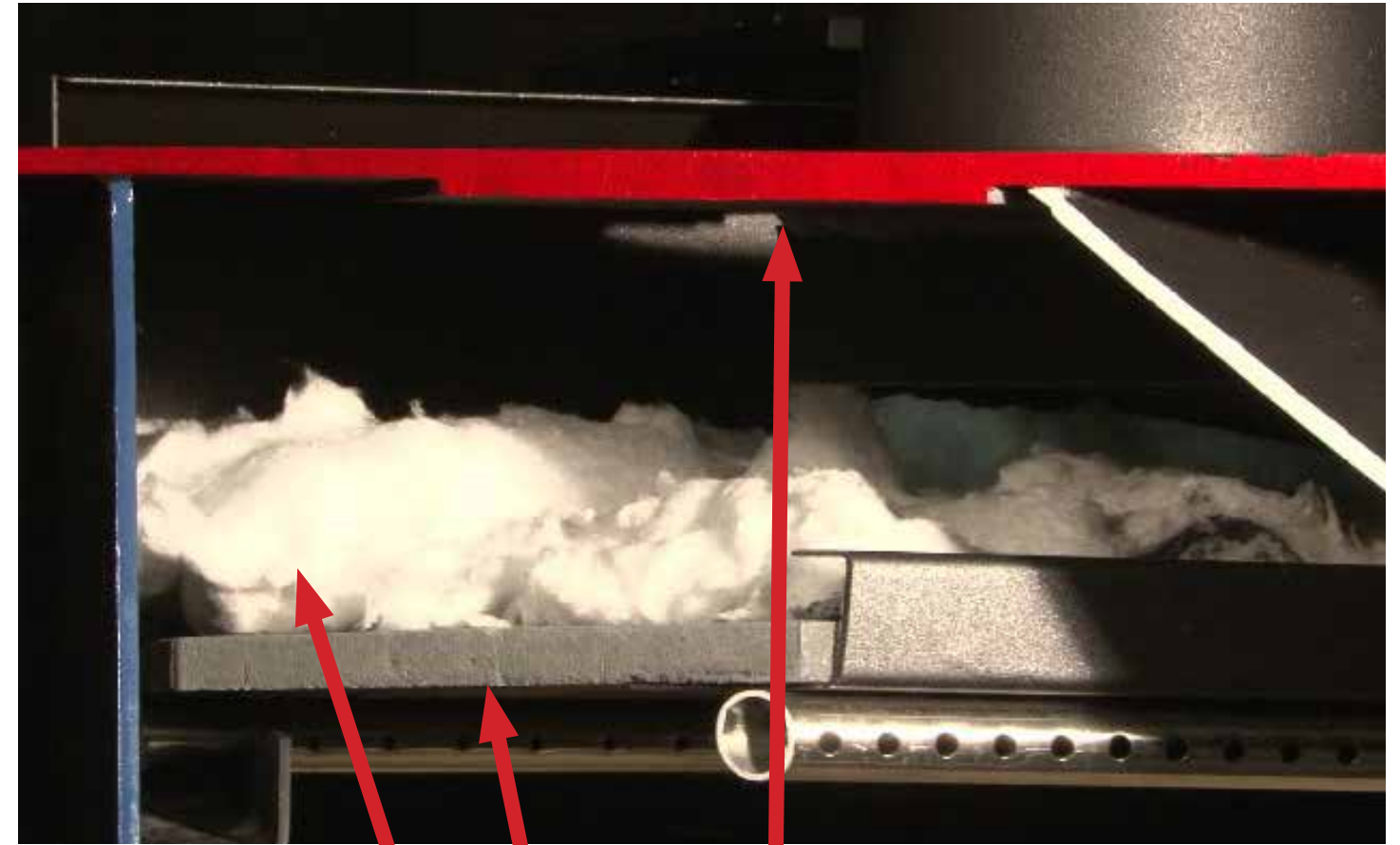


# Firebox Top - Ours



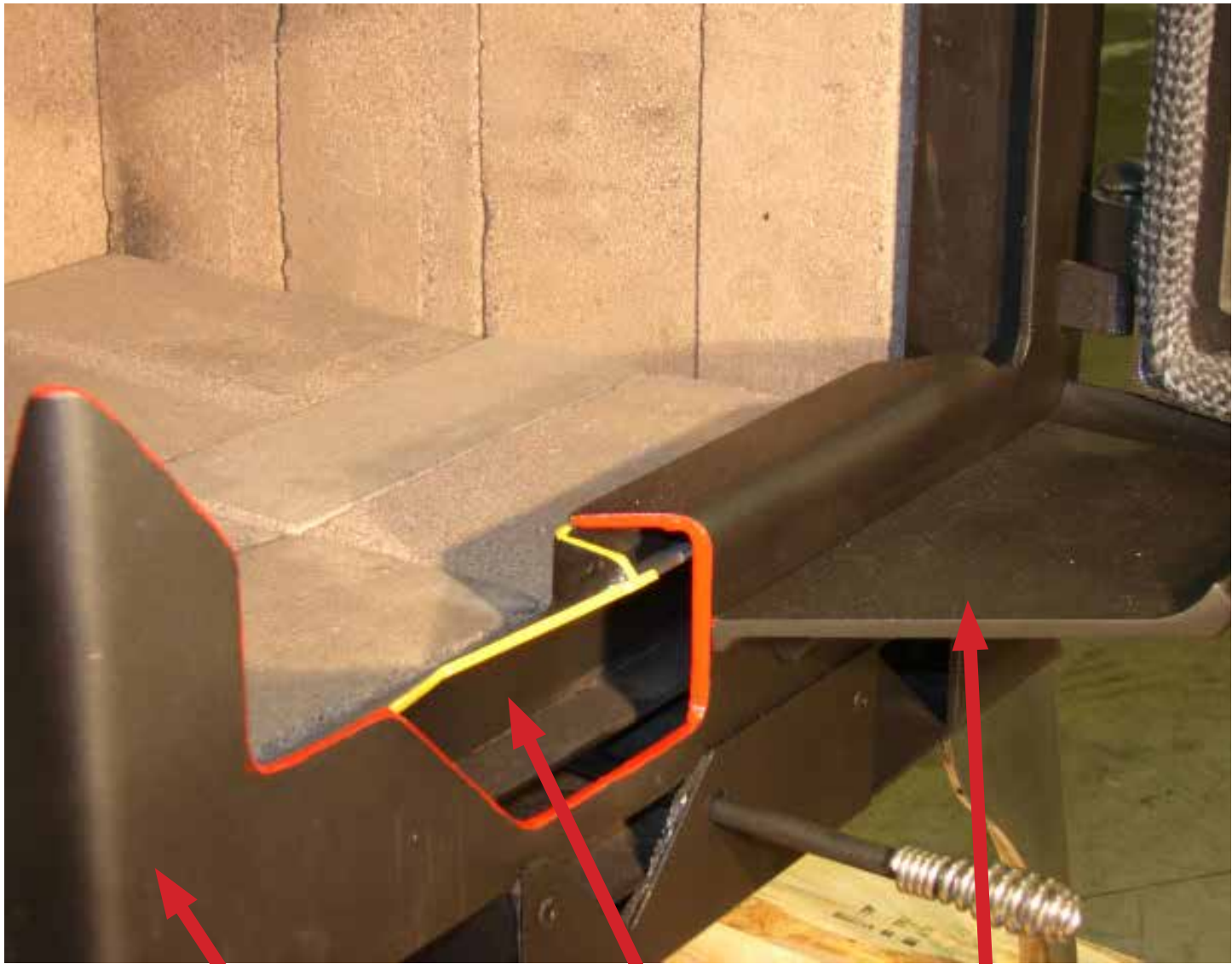
- **5/16" Top Plate**
- **3/16" Unibody Construction**
- **Brick Baffle**
- **No Short Term Replacement Parts**

# Firebox Top - Theirs



- **1/8" Steel Plate Welded to 3/16 Plate (Claimed as 5/16" Top)**
- **Frigile Fiber Board Baffle**
- **Insulation Blanket**

# Stove Construction - Ours

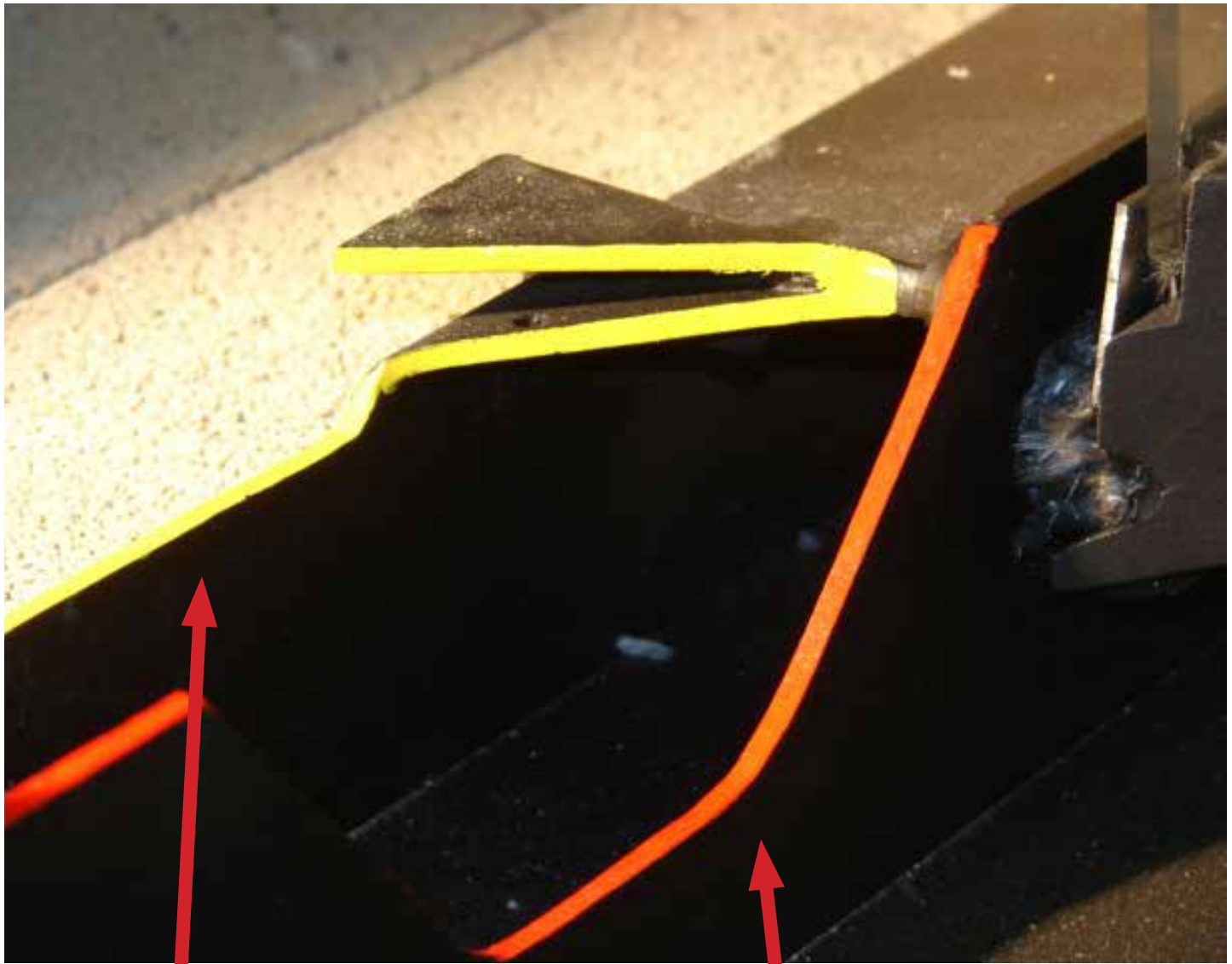


**3/16" Unibody Construction**

**3/16" Floor**

**Cast Ashlip**

# Stove Construction - Theirs



**1/8" Firebox Floor**

**7 Piece Firebox Non-Unibody Construction**



## **Brick Liner - Ours**



**Heavy Masonry Firebrick -  
Clay Based Kiln Fired for Durability  
Brick Weight: 3.4 lbs.**

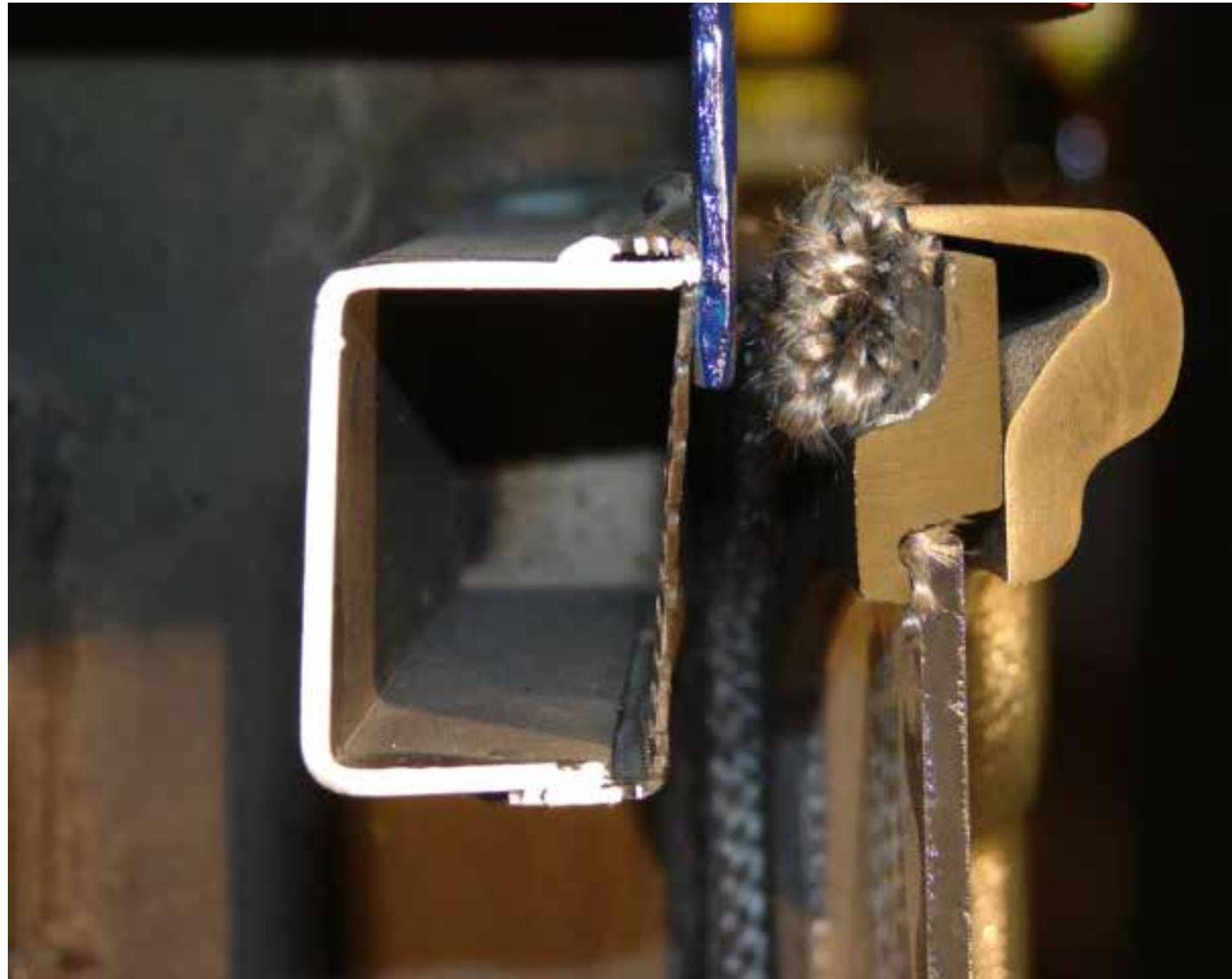
## **Brick Liner - Theirs**



**Light Weight Pumice and Cement  
Firebrick - No Durability or Longevity  
Not Designed For Heat  
Brick Weight: 1.9 lbs.**

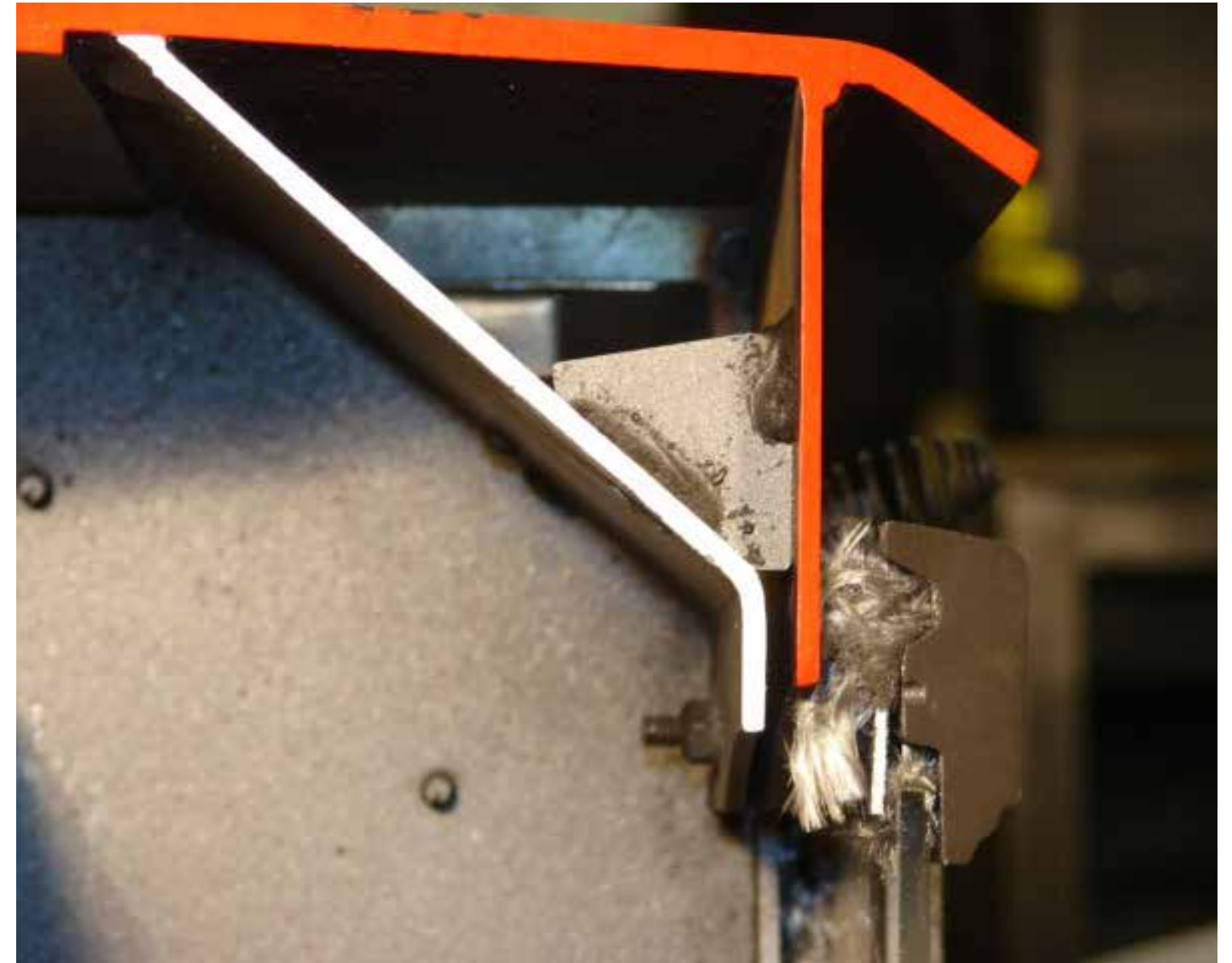


# Airwash - Ours



- **Welded In**
- **Preheated Air**

# Airwash - Theirs



- **Bolted in**
- **Not Completely Welded**
- **No Preheated Air**
- **Pim Stud Construction**

# Installation - Ours

- (a) Min. System Height 15'  
Max. System Height 33'
- (b) Roof Penetration and Termination (see chimney manufacturer's requirements)
- (c) Chimney Sections
- (d) Floor Penetration (see chimney manufacturer's requirements)
- (e) Min. air space to combustibles (see chimney manufacturer's requirements – typically 2")
- (f) Connector – see "Chimney Connector" on the previous page.

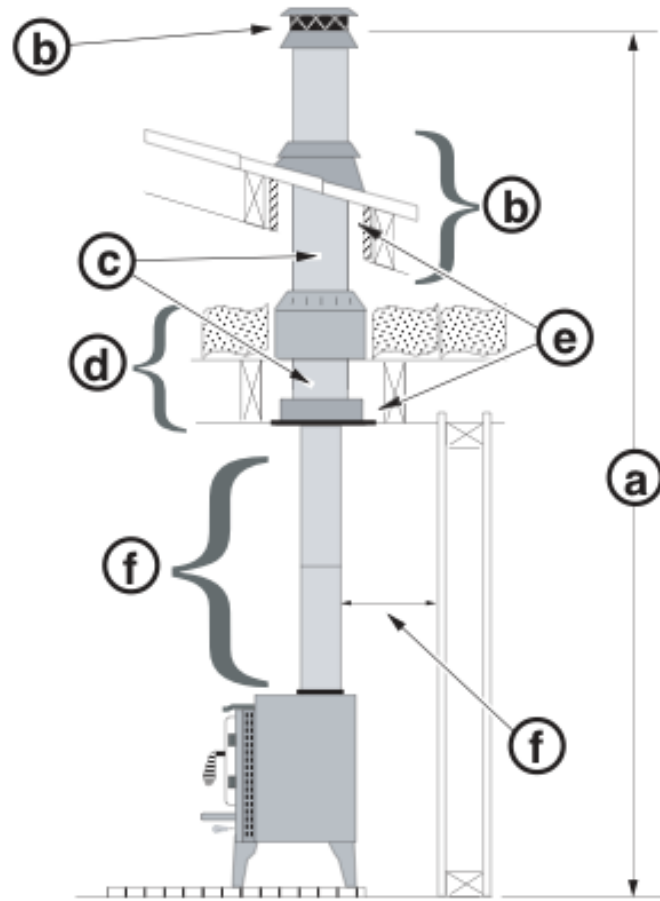


Figure 4

- **No Performance Restrictions**
- **33 Foot Maximum Tested Flue Run**
- **No Elevation Restrictions**

# Installation - Theirs

## E. Chimney Height / Rise and Run

- This product was designed for and tested on a 6 inch (152mm) chimney, 14 to 16 feet (427-487cm) high, (includes appliance height) measured from the base of the appliance.
- The further your stack height or diameter varies from this configuration, the possibility of performance problems exists.
- Chimney height may need to be increased by 2 - 3% per each 1000 feet (304.8m) above sea level.
- It is not recommended to use offsets or elbows at altitudes above 4000 feet (1219.2m) above sea level or when there are other factors that affect flue draft.

- **Performance Restrictions**
- **14-16 Foot Maximum Tested Flue Run**
- **Not Recommended For Installation Over 4,000 Feet**



# Travis: Construction



# Competitive Product: Construction



## Dare To Compare

	<u>Travis</u>	<u>Competition</u>
Brick	Heavy, dense masonry 3.4 lbs.	Light weight pumice 1.9 lbs.
Unibody	Yes	No - multiple pieces
Fit & Finish	Clean welds/no slag	Rough welds/slag
Flue Collar	5/16" continuous steel tube	Low grade thin casting
Door	Superior Casting	Low grade casting
Steel Thickness:	Top 5/16" Side 3/16"	Top 1/4", Sides 3/16", Bottom 1/8"
Baffle:	Masonry	Ceramic board with wool blanket
Convection:	Full 5-sided	Rear only
Weight:	448 lbs- heavy duty 60% heavier. Long Life!	272 lbs- overall light weight construction. Will not last long
Bypass Damper:	YES	NO
GreenStart Option:	YES	NO



Copyright T.I. 2013

Photos and illustrations are for descriptive purposes only. We reserve the right to improve or change our products without prior notification.

Ember-Fyre™, GreenSmart™ and all other trademarks belong to Travis Industries, Inc. Consult the Owner's Manual for complete installation requirements.